



Aquip® Media Filter

enhanced passive media filtration

Aquip® Advantages

- Removes suspended solids, turbidity, dissolved pollutants (including heavy metals), organics and phosphorus
- Targeted metals include copper, zinc, iron, lead, aluminum, nickel and others
- Patented filtration —no chemicals or backwash
- Passive gravity flow-through system —no moving parts
- Open top for easy access and maintenance
- Operates unattended
- Simple and safe effluent sampling
- TAPE CULD approved

Aquip (uh-KWIP) is a patented[†], passive media filtration technology for enhanced stormwater treatment. Sized to fit the hydrology of the site, Aquip is typically installed above ground and fed by a simple pump station.

Aquip's simple, easy-to-operate system uses media that can be formulated to remove a wide range of pollutants: suspended solids, turbidity, heavy metals (including dissolved metals), organics (e.g. COD and hydrocarbons); and nutrients like nitrogen and phosphorus. Targeted metals include copper, lead, zinc, iron, aluminum, nickel, cadmium and others.

Target Pollutants	
Suspended solids	COD
Turbidity	Phosphorus
Metals	



[†]US Pat. 8,002,974, Canada Pat. 2,640,800

Model	Treatment Rate (gpm)	Footprint (ft x ft)
10S/P	5 - 15	3 x 9
25S	12 - 40	5 x 9
50S	25 - 75	7 x 12
80S	40 - 120	7 x 16
110S	60 - 170	8 x 18
160S	80 - 240	8 x 27
210S	100 - 320	8 x 32
300S	150 - 450	13 x 36
400S	200 - 600	13 x 47

* Recommended model size depends upon application. Please contact StormwaterRx for more information.

Options

- Available structures include steel, concrete, and plastic
- Freeze protection, cover and other options available

StormwaterRx LLC designs, manufactures, installs and maintains stormwater treatment systems for industrial customers. Contact StormwaterRx to find out how we can help you meet your stormwater quality requirements.



Aquip[®] Enhanced Media Filter



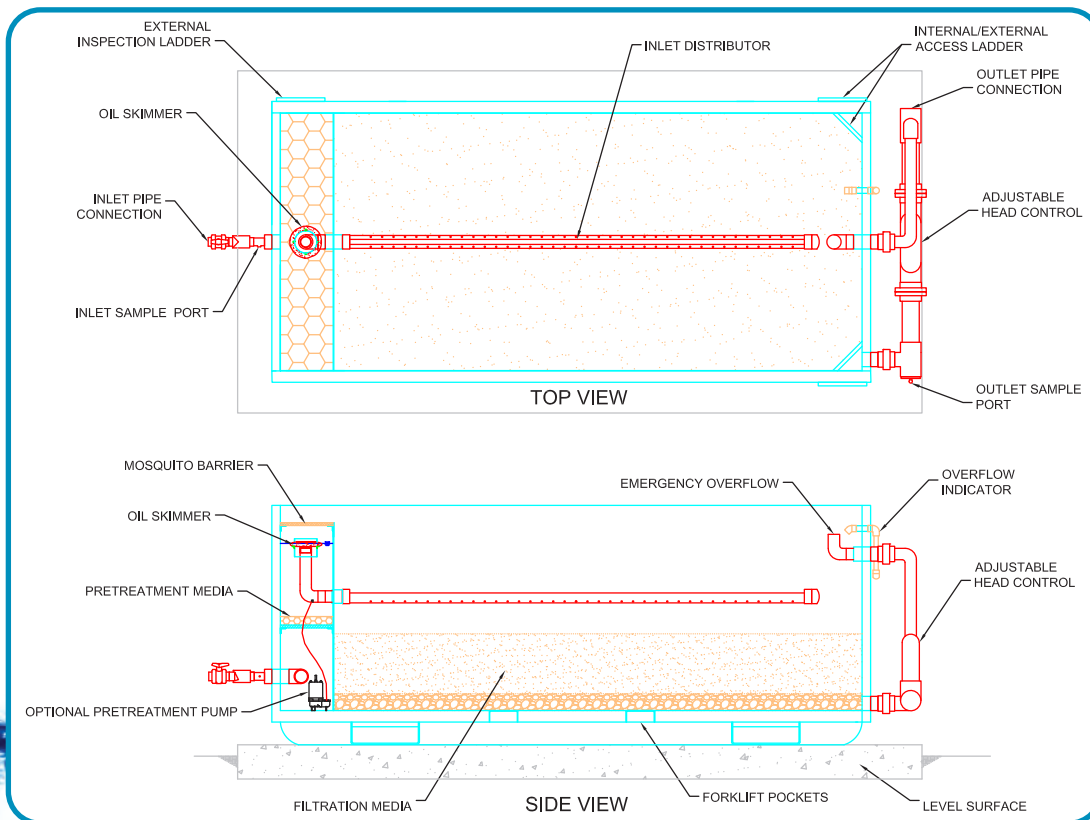
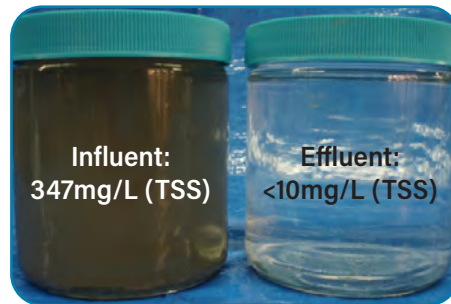
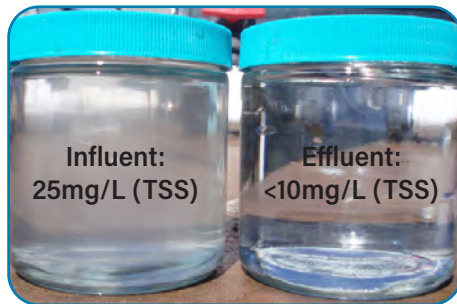
Aquip 110S with optional freeze protection and rolltop cover



Aquip 250C underground (full gravity flow)



Aquip 400SBE



1.800.680.3543
stormwaterRx.com